



AMERSHAM SOCIETY



**AMERSHAM
MUSEUM**

43 Whielden Street

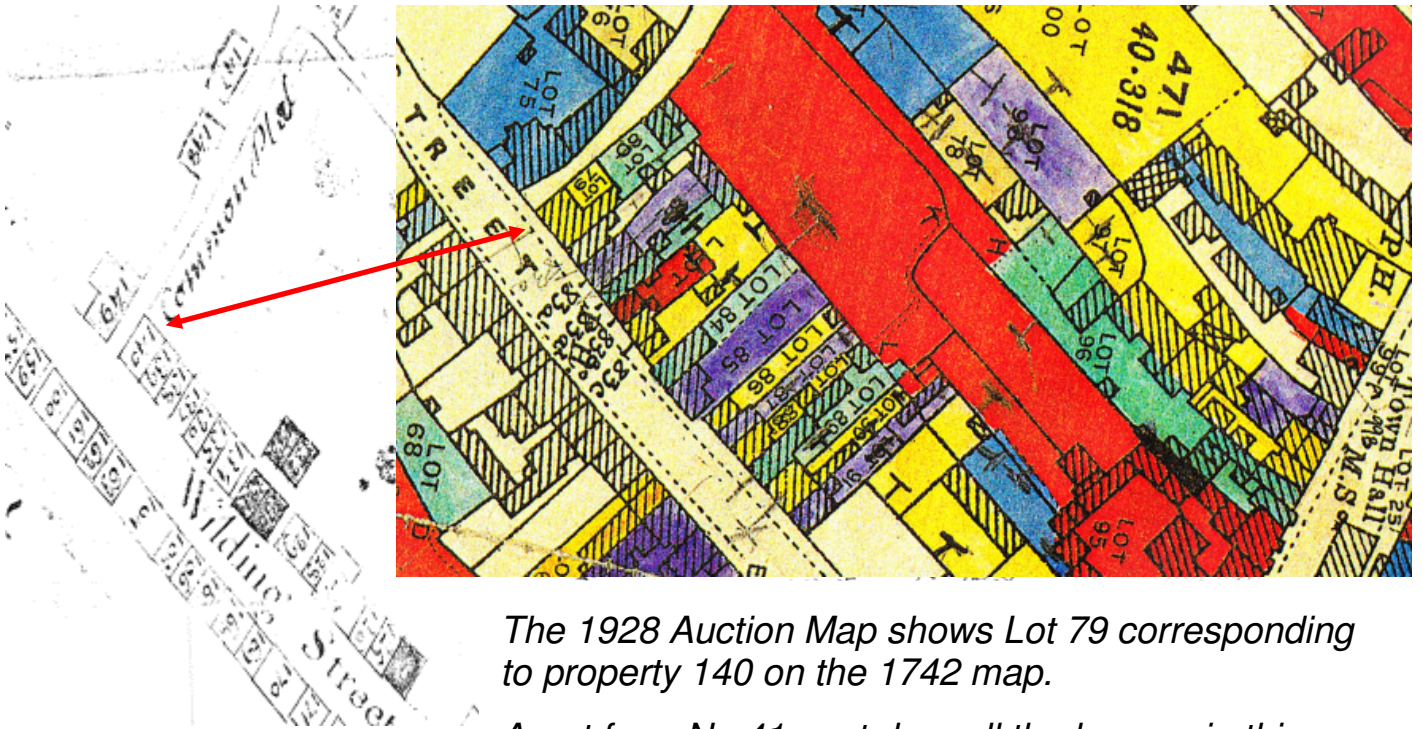
In the 1742 map of Amersham this road is called Wilding Street. The extract shown below shows the Common Platt (now The Platt) which ran parallel to the High Street at the end of each 'burgage plot'. The red dotted line shows the length of a burgage plot – typically how far a team of oxen could pull a plough to make a furrow before they needed to rest and were turned round: so, a furrow long – hence a furlong, 220 yards.



Most of the houses in Whielden Street (including this one, shown with a solid arrow) were targeted for purchase by the Drake family. This was because the residents were entitled to vote in elections and the Drake family wanted to put in tenants who would vote for them; there was no secret ballot until 1872.

For more information on this and other Amersham houses, go to www.amershamhistory.info
For more information on the Amersham Society, go to www.amershamsociety.org

In 1742, this house (and the one next door) were owned by a Mr Bovingdon but it was included in the Tyrwhitt-Drake sale of property by auction in 1928 (see map below) although a sale was probably agreed with the tenant before the auction catalogue was printed because Lot 79 does not appear in the catalogue.



The 1928 Auction Map shows Lot 79 corresponding to property 140 on the 1742 map.

Apart from No 41 next door all the houses in this row had been purchased by the Tyrwhitt-Drake family.

The black lion over the door suggests that this might have been a public house at some time but if so this must have been before 1841 because it is not shown in census returns.

The census show it was a grocer's shop in 1841 and 1851 occupied by Thomas Phillips (b. 1788). In 1861 and 1871 Elizabeth Lee (b. 1823) was a grocer and wife of John Lee (b. 1824) who was a bricklayer. Elizabeth Lee continued to live in the house with her husband in 1881 and 1891 but no occupation is recorded against her name. However, in the 1901 and 1911 census Elizabeth Keen (b. 1851) is listed as grocer/shopkeeper while her husband, Frederick, was listed as a bricklayer. In the 1939 Register, drawn up at the outbreak of World War 2, only Ruth Slade, widow and pensioner (b. 1856) and Alive Hewett, dress-maker (b. 1878) were living there. Kelly's Directory of 1935 shows Arthur William Cater as a Grocer and the family continued as grocers there at least until 1952 but perhaps they rented part of the house for the business (although Arthur William Cater is listed in 1939 as a mender in the gas works and lives further up Whielden Street.)

For more information on this and other Amersham houses, go to www.amershamhistory.info
For more information on the Amersham Society, go to www.amershamsociety.org